



# MDPRO M2

## Bladder Scanner POWERED BY PEAKSONIC

The MDPro M2 is an advanced handheld bladder scanner for versatile medical use that provides the basis for clinical catheterization, post-void residual assessment, and diagnosis of bladder and kidney diseases. It's suitable for various medical departments and helpful for patients with lower body disabilities or loss of auto-urination function.



**10,000**

Cases in Data Storage

**2.4"**

LCD Display Touch Screen

**2.5 MHz**

Probe Frequency

**2.5 HR**

Continuous Scanning Time

# Features

---

- 2.4-inch LCD display and touch screen
- Non-invasive 3D urinary bladder volume measurement
- Volume measurement accuracy:  $\pm 7\%$
- Large data storage space: 10,000+ cases
- Rapid scanning, measurement results within seconds
- No annual calibration is needed
- Optional printer

**Scan Modes:** 3D Scan

**Print Mode:** Wireless Bluetooth Printer (Optional)

**Working Mode(s):** Easy, Expert, and Intelligence Mode

# Data Storage & Transmission

---

## Data Transmission:

- USB

## Data Storage:

- Built-in TF card



Primary Care



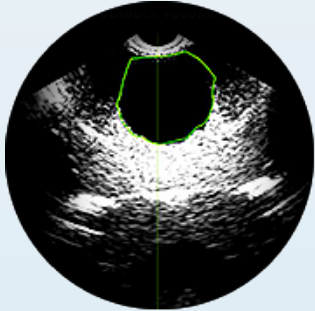
ASC



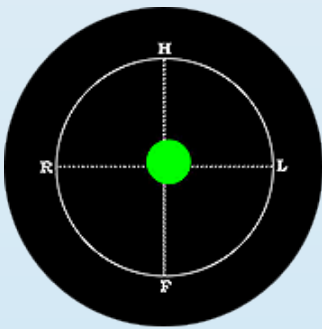
Longterm Care

## Display

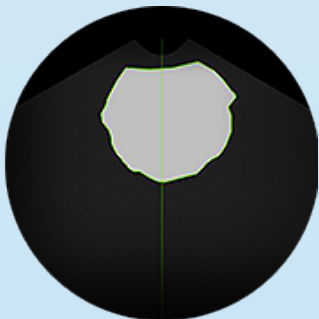
---



**Expert Mode**  
(Displays an Ultrasonic Image)



**Intelligence Mode**  
(Displays a Real-Time Bladder Scan Projection Position)



**Easy Mode**  
(Displays an Easy to View Figure)

## Highlights

---



Automatic Bladder Positioning



Data Entry by Virtual Keyboard or Voice Annotation

## Working Modes

---

### Modes selection:

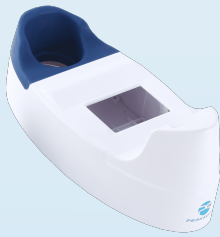
Users can choose from easy, expert, or intelligence mode. When performing a pre-scan, the operator will observe the following exam results:

- Move the probe until the center of the bladder image reaches the green line
- Press scan button once the biggest bladder section is detected
- Twelve real time bladder ultrasonic images will be displayed during scanning
- Results include a volumetric reading along with images and patient information

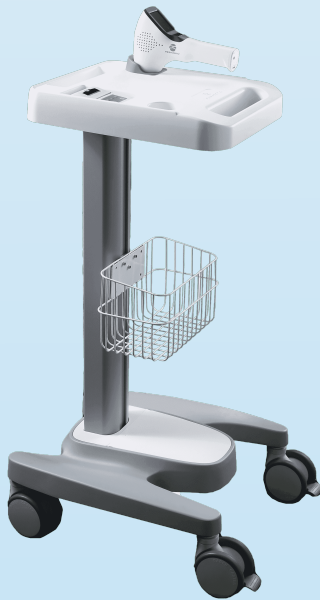
# Images



**Printer**  
(Part Number: PS\_Printer)



Docking Station



**Cart**  
(Part Number: M2\_Cart)

# Specifications

**Modes of Scan**  
3D Scan

**Probe Frequency**  
2.5 MHZ

**Volume Measurement Accuracy**  
 $\pm 7\%$ ,  $\pm 7\text{ml}$

**Scanning Time**  
< 5 Seconds

**Measure Volume**  
0ml-999ml

**Operation Mode**  
Easy, Expert, Intelligence Mode

**Language Selection**  
English, Spanish, Swedish, Portuguese,  
Finnish, Chinese, French, Danish, Dutch,  
Norsk, German, Italian

**Battery Capacity**  
2600 mAh

**Print Mode**  
Wireless Bluetooth Printer (Optional)

**Data Transmission**  
USB

**Data Storage**  
Built-in TF card

**Continuous Usage**  
2 hrs 30 min

**Stand By**  
 $\geq 5$  hours

